

V100

Manual Clamping Mixer



- ➔ Compact and Cost-effective
- ➔ Easy Clamping

SANTINT • CHINA

Add: Feilong Road, Xingyang,
Zhengzhou, China
Email: info@santint.com

SANTINT • HOLLAND

Add: Lageweg 35 - J, 2222 AG
Katwijk The Netherlands
Email: sales@santint-europe.com

SANTINT • POLAND

Add: 19 Postępu Street
(warehouse no. 5)02-676
Warsaw, Poland
Email: albert@santintpoland.com

SANTINT • U.S.A

Add: 2000 Bloomingdale Road,
Suite 205, Glendale Heights,
IL 60139, U.S.A
Email: info@santintusa.com

SANTINT • BRAZIL

Add: Av.Rosa Kasinski,
1109, G29 Capuava,Mauá,
SP - Brasil CEP 09380-128
Email: marcos@santint.com

SANTINT • INDIA

Add: H.No.692, Gala No.04,
Print World Industrial Complex,
Bhatale, Vehele Village, Opposite
Balaji Compound, Bhiwandi,
Maharashtra – 421302
Email: nick@santint.com

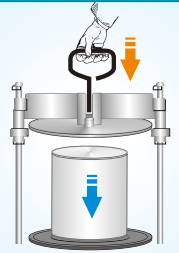
V100 FEATURES >>>



● Optional Floor Stand

1 Easy Clamping

Press and push to clamp.

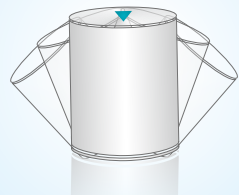


2 Vortex Rotation

Rotation with 30° dip angle, ensured mixing performance.

3 Auto Return

The can returns back to the original position after mixing, convenient to unload the can.



4 Safety Door Lock (Optional)

A safety door lock stop the door from being accidentally opened until the mixing cycle finishes for safe operation.

5 LCD Counter



- | | | | |
|--------------------------------|--|---------------------|--------|
| ■ Mixing Mode | Vortex | ■ Max Mixing Weight | 10kg |
| ■ Mixing Time | 0-5min | ■ Mixing Speed | 210rpm |
| ■ Mixing Range | Can size 0.15-5L Diameter 30-200mm Height 45-260mm | | |
| ■ Machine Dimension(W X D X H) | 530×645×780mm | | |
| ■ Packing Dimension(W X D X H) | 550×715×780mm | | |
| | 54Pieces/20GP | | |
| ■ Net Weight | 77kg | ■ Gross Weight | 85kg |
| ■ Power Supply | 220V/110V 50Hz/60Hz | ■ Power | 250W |

V100

Technical Parameters

